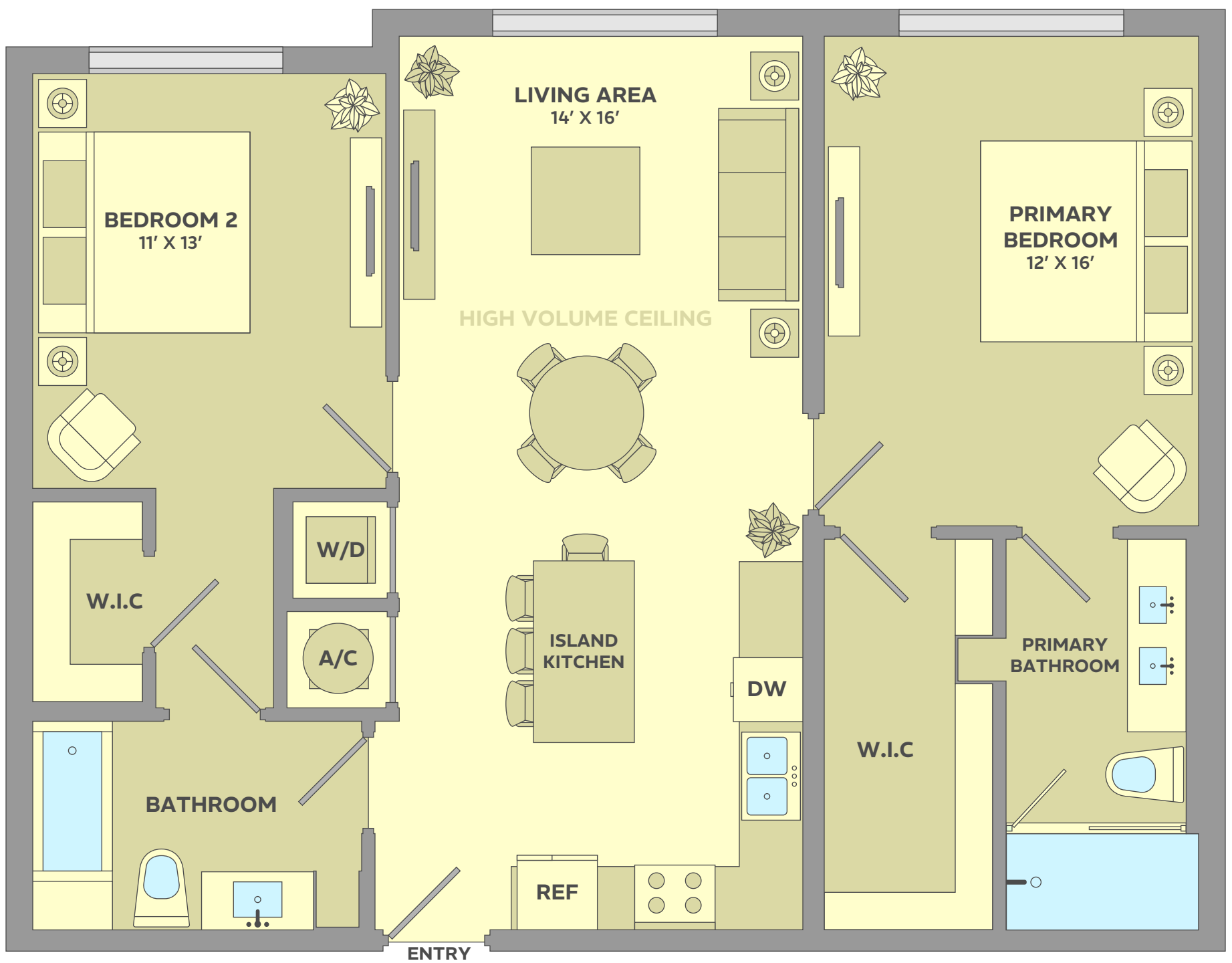


# B6

2 BED / 2 BATH | 1089 A/C SQ.FT.



APARTMENTS - 125 . 142

**METROPOLITAN**

CORAL SPRINGS

9000 RAMBLEWOOD DRIVE, CORAL SPRINGS, FLORIDA 33071

UNIT SIZES, DIMENSIONS, LAYOUT, BALCONIES AND FEATURES ARE CONCEPTUAL AND SUBJECT TO CHANGE WITHOUT NOTICE. THIS DIAGRAM IS A CONCEPTUAL REPRESENTATION OF THE BUILDING FLOOR PLANS. CERTAIN UNITS HAVE SMALLER & DIFFERENT TERRACE / PATIO CONFIGURATIONS. CERTAIN UNITS HAVE LESS A/C LIVING SPACE DUE TO BUILDING SETBACKS. PERSPECTIVE TENANTS SHOULD VERIFY WITH THE BUILDING LEASING REPRESENTATIVES TO THEIR OWN SATISFACTION. ABOVE INFORMATION IS SUBJECT TO CHANGE, ERROR, MARKET ADJUSTMENTS AND RETRACTION WITHOUT NOTICE. PARKING LOT GATES PROVIDE LIMITED ACCESS, SECURITY RISKS CAN STILL OCCUR.

